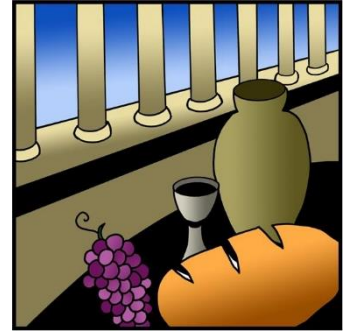


Thirteenth Sunday after Pentecost

August 18, 2024 – 10am

Modern Worship, ELW Setting 10



Prelude Music

Announcements

Confession and Forgiveness

P: Blessed be the holy Trinity, † one God, the God of manna, the God of miracles, the God of mercy.

C: Amen.

P: Drawn to Christ and seeking God's abundance, let us confess our sin.

Silence is kept for reflection.

P: God, our provider,

C: ... help us. It is hard to believe there is enough to share. We question your ways when they differ from the ways of the world in which we live. We turn to our own understanding rather than trusting in you. We take offense at your teachings and your ways. Turn us again to you. Where else can we turn? Share with us the words of eternal life and feed us for life in the world. Amen.

P: Beloved people of God: in Jesus, the manna from heaven, you are fed and nourished. By Jesus, the worker of miracles, there is always more than enough. Through Jesus, † the bread of life, you are shown God's mercy: you are forgiven and loved into abundant life.

C: Amen.

Gathering Song: *Amen (Because He Lives)*

I believe in the Son I believe in the Risen One; I believe I overcome by the power of His blood;

Amen, amen, I'm alive, I'm alive because He lives;
Amen, amen, let my song join the one that never ends

I was dead in the grave; I was covered in sin and shame; I heard mercy call my name; He rolled the stone away.

Amen, amen, I'm alive I'm alive because He lives;
Amen, amen, let my song join the one that never ends

Because He lives, I can face tomorrow; because He lives ev'ry fear is gone;
I know He holds my life my future in His hand.

Amen, amen, I'm alive, I'm alive because He lives;
Amen, amen, let my song join the one that never ends;

(continued on next page)

Amen, amen, I'm alive, I'm alive because He lives;
Amen, amen; let my song join the one that never ends
... because He lives; Because He lives.

Greeting

P: The grace of our Lord Jesus Christ, the love of God, and the communion of the Holy Spirit, be with you all!
C: **And also with you!**


Kyrie

p. 203



S203

1 Have mer - cy on us, Lord, and hear our sol - emn prayer.
2 Have mer - cy on us, Christ, and wash a - way our sin.
3 Have mer - cy on us, Lord; make sin and shame de - part.



We come to hear your liv - ing word; it saves us from de - spair.
Pour out your grace and make us whole that new life may be - gin.
Re - new us with your sav - ing pow'r; cre - ate in us new hearts!

Prayer of the Day

A: Let us pray together,

C: **Ever-loving God, your Son gives himself as living bread for the life of the world. Fill us with such a knowledge of his presence that we may be strengthened and sustained by his risen life to serve you continually, through Jesus Christ, our Savior and Lord. Amen.**

Children's Message

Pr. Paul

First Reading: Proverbs 9:1-6

Wisdom is portrayed as a woman who invites people to partake of her banquet. Just as ordinary food is necessary for physical life, Wisdom's food—insight and understanding—is necessary for fullness of life with God. Partaking of Wisdom's banquet is the way to life.

1 Wisdom has built her house, she has hewn her seven pillars. 2 She has slaughtered her animals, she has mixed her wine, she has also set her table. 3 She has sent out her servant-girls, she calls from the highest places in the town, 4 "You that are simple, turn in here!" To those without sense she says, 5 "Come, eat of my bread and drink of the wine I have mixed. 6 Lay aside immaturity, and live, and walk in the way of insight."

L: The Word of the Lord

C: **Thanks be to God**

Gospel Acclamation:

Alleluia

p. 205



S205a

Al - le - lu - ia! Lord and Sav - ior: o - pen now your sav - ing word.



Gospel:

John 6:51-58 (The Message)

In John's gospel, the feeding of the five thousand leads to extended teaching in which Jesus identifies himself as the true "bread of life." Finally, in these verses, he makes a connection that would not be understood until after his death, in light of the church's celebration of holy communion.

P: A reading from... **C: Glory to You, O Lord.**

51 I am the Bread of Life. Your ancestors ate the manna bread in the desert and died. But now here is Bread that truly comes down out of heaven. Anyone eating this Bread will not die, ever. I am the Bread—living Bread!—who came down out of heaven. Anyone who eats this Bread will live—and forever! The Bread that I present to the world so that it can eat and live is myself, this flesh-and-blood self.” 52 At this, the Jews started fighting among themselves: “How can this man serve up his flesh for a meal?” 53-58 But Jesus didn't give an inch. “Only insofar as you eat and drink flesh and blood, the flesh and blood of the Son of Man, do you have life within you. The one who brings a hearty appetite to this eating and drinking has eternal life and will be fit and ready for the Final Day. My flesh is real food and my blood is real drink. By eating my flesh and drinking my blood you enter into me and I into you. In the same way that the fully alive Father sent me here and I live because of him, so the one who makes a meal of me lives because of me. This is the Bread from heaven. Your ancestors ate bread and later died. Whoever eats this Bread will live always.”

P: The Gospel of the Lord.
C: Praise to you, O Christ.

Sermon

Pastor Paul Busekist

Song of the Day:

By Your Hand You Feed Your People

ELW #469

Apostles Creed

I believe in God, the Father almighty, creator of Heaven and earth.

I believe in Jesus Christ, God's only Son, our Lord, who was conceived by the Holy Spirit, born of the virgin Mary, suffered under Pontius Pilate, was crucified, died, and was buried; he descended to the dead. On the third day he rose again; he ascended into heaven, he is seated at the right hand of the Father, and he will come to judge the living and the dead.

I believe in the Holy Spirit, the holy catholic church, the communion of saints, the forgiveness of sins, the resurrection of the body, and the life everlasting. Amen.

Prayers of the Church / Sign of the Peace *(Let us give one another a sign of peace according to your comfort level.)*

Offering / Offering Song: Zeke Clemons

Offertory: *As the Grains of Wheat* ELW #465

Offering Prayer

A: Let us pray together.

C: Jesus, Bread of life, you have set this table with your very self, and called us to the feast of plenty. Gather what has been sown among us, and strengthen us in this meal. Make us to be what we receive here, your body for the life of the world. Amen.

Words of Institution / Lord's Prayer

Our Father, who art in heaven, hallowed be thy name, thy kingdom come, thy will be done, on earth as it is in heaven. Give us this day our daily bread; and forgive us our trespasses, as we forgive those who trespass against us; and lead us not into temptation, but deliver us from evil. For thine is the kingdom, and the power, and the glory, forever and ever. Amen.

Communion (Please note: gluten-free wafers and white grape juice cups are available)

Communion Songs: *United at the Table* ELW #498
Around You, O Lord Jesus ELW # 468

Final Blessing

P: The blessing of God, who provides for us, feeds us, and journeys with us, ☩ be upon you now and forever.
C: Amen.

Sending Song: *Open Up the Heavens* McDonald, Ingram & Andrews

We've waited for this day. We're gathered in Your Name, calling out to You.
Your glory, like a fire, awakening desire, will burn our hearts with truth.

You're the reason we're here. You're the reason we're singing.

Open up the heavens. We want to see You. Open up the floodgates, a mighty river, flowing from Your heart, filling every part of our praise.

Your presence in this place, Your glory on our face, we're looking to the sky.
Descending like a cloud, You're standing with us now. Lord, unveil our eyes.

You're the reason we're here. You're the reason we're singing.

Open up the heavens. We want to see You. Open up the floodgates, a mighty river, flowing from Your heart, filling every part of our praise.

Open up the heavens. We want to see You. Open up the floodgates, a mighty river, flowing from Your heart, filling every part of our praise.

Show us, show us your glory. Show us, show us your power. Show us, show us your glory, Lord. (continued on next page)

Show us, show us your glory. Show us, show us your power. Show us, show us your glory, Lord.

Open up the heavens. We want to see You. Open up the floodgates, a mighty river, flowing from Your heart, filling every part of our praise.

Dismissal

A: Go in peace. You are the body of Christ.

C: Thanks be to God.



Bethlehem August 18, 2024
LUTHERAN CHURCH

1050 Peninsula Drive
Traverse City, MI 49686
(231) 947-9880
www.bethlehemtc.org

HAPPY BIRTHDAY

8/20—Quenten Branch

8/20—Kathie Bair

8/21—Jennifer Anderson

8/22—Cindy Peterson

8/24—Kathy Ancinac

8/25—Bonnie Newhouse

Worship Servants for August 18

Assisting Minister—Karen Feahr

Lector—Steve Kramer

Musicians: David Husser, Zeke Clemons, Phil & Denice Bossardet, Pr. Paul

Today's altar flowers are donated: *by Ron and Marilyn Dork in Honor of the wedding of Luke Friedli and Katherine Tomas*

Hospitality—Tom Fink / Deb Hissong

A/V—Jim Monroe / Barbara Oster

Cookies/Coffee—Laura Hahn / Mary Ann Tanis

Welcome Table—VOLUNTEER

Bell Ringer—Tim Goebel

Front Door Monitors—Maureen Bauer

Altar Guild—Patty Leibenguth / Erin Word

Tech Support—Julia Acker

Counters—Jane Passmore / Bonnie Gamble

Coffee and Cookies on Sunday: Remember that treats and a drink on Sunday are appreciated by all. **The sign-up sheet has many BLANK spaces so please take a moment to sign up to bring cookies or some other tasty treat on the Sunday that works best for you.** Or sign up to prepare the coffee to give our loyal volunteer Mary Ann Tanis a day off.

CHAIR YOGA: Chair Yoga will continue through the month of October except for Mondays September 23, 30 and October 7. Janet, the instructor, will return on October 14th. We will meet every Monday at 3:00 in the Fellowship Hall. Cost is \$5.00 per person. It is slow paced stretches that helps with balance, flexibility and relaxation. Come and try it out.

The August issue of the STAR is now available. If you receive the weekly email, your issue was emailed on July 30th. The shut-ins will receive an issue by mail. There will also be a few copies available on the counter by the mailboxes. You may also contact the office at 947-9880 to request that mail delivery continues. For current issues of the Star, feel free to check online at www.bethlehemtc.org < About Us > “The Online Bethlehem Star” or type this URL to get these directly: <http://www.bethlehemtc.org/the-bethlehem-star-newsletter>.

EXTRA CARS AND VEHICLES COMING TO BLC PARKING LOT: The alley behind our parking lot will finally be paved between August 19 and Sept 19. YAY!!! The city asked if our lot could be used by residents on the alley when access to their homes is blocked. We generously replied “yes!” So expect to see extra cars and perhaps Elmer’s vehicles in our lot at various times including Sunday mornings. In return for our generosity both Elmer’s and Traverse City gave us a sizeable reduction on the bill which we have to pay for this paving. Kindness truly yields kindness! Please say “hi” to our neighbors if you see them in the lot and tell the Elmer’s crew “Thank you!”

Are you grieving something from a death or something else? It could be any kind of loss, and it hurts. We have a place for you here at Bethlehem on the 3rd Monday of the month from 6:00 to 7:00 in the library. If you have any questions please contact Peggy Burns at 231 392-6913.

JOIN THE VISION TRAIN: Visioning Conversations with the congregation are planned, we are moving forward, the train is preparing to leave the depot. Jump on board! Join in the conversation! Events Include:

Sunday, October 6, Listening for God in Scripture

Sunday, October 20, Listening for God in the Congregation

Sunday, November 17, Listening for God in Community

Each of the above Sundays will begin following worship sharing a meal. Our facilitator, Rev. Roger Hardy, will join us to guide us through our time together and aid us in gathering information. What you have on your heart and mind is important to the process. Please mark your calendars and make every effort to attend. Stay tuned... more information to come!!!!

Good Samaritan Fund Drive for August: This is one of our local outreach initiatives that allows us to be able to help our local residents when there may be a need for assistance with food, gas, a doctor bill, etc. We have been lucky in the past to help many many families and hope that you will once again help us build back this dwindling fund. Please, if paying by check, make the check payable to Bethlehem Lutheran Church with Good Samaritan fund in the memo line. Check out the special board in the Narthex for more information.

CHANGE OF PLANS FOR BOOK CLUB: The book club will meet at 5:30 in the Fellowship Hall on Wed Aug 21 to discuss the best seller The Women by Kristin Hannah.

WALK FOR PARKINSON'S: One of our members, Margaret Hutchison, recently received that diagnosis. She and her family will be participating in the Parkinson's walk at the Civic Center on the morning of Sat. Aug 24. Just as some from BLC supported a member for the epilepsy walk we are hoping to have a good showing for this walk at 10:30. Even if you can't walk you can receive a free t-shirt from Thrivent which will also be labeled with "Margaret's Marchers". If you would like to donate see the web instructions in the weekly email. REMEMBER, JIM AND MARGARET HAVE PLEDGED AN ADDITIONAL \$20 FOR EVERY PERSON/FAMILY UNIT FROM BLC WHO CONTRIBUTES TO THIS WALK!!!!

Volunteers for Watching the Front Door During Worship: The Safety and Security Committee has the new sign up sheets available. We need volunteers who can be available to stay in the Gathering Space to lock the doors and let in late comers for Sundays in August. We appreciate all of the volunteers. If you have any questions, the committee members are Gail Goldsmith, Maureen Bauer, Jana Rockne and Jan Stretlien

FOOD PANTRY NEWS: The recent readings remind us to be generous; to give of ourselves for the benefit of others. Sharing what we have and being generous does not take from what we have for ourselves. Giving of ourselves nourishes our hearts and souls. We are reminded that in faith all will be nourished, food will be fruitful, and there will be plenty for all. I urge all of you to be generous and give from your heart. Remember that if you have a Thrivent account you can apply for a \$250 grant to use to help us stock the food pantry. Buy a few extra items at the grocery store. This is a great way to take care of members of our community who are struggling to feed themselves and their families. Additional items we can put in the pantry are tooth brushes, trial size soaps, female products in small packages, and similar items. Thank you all for your support and love. Suzanne and Kathie

PROTECT OUR CARPET: spills always happen, but we now have a consistent way to deal with them. If you cause one or see one, please grab the spot cleaner in the squirt container over by the triple sinks in the kitchen. Just follow the directions on the bottle and we should be able to keep our carpet in good condition. Thank you!!

Spotlight on Zeke: So many of us enjoy Zeke's talents with religious music, but did you know that he plays other kinds of music at various locations in the Traverse City area? Here is a list of his engagements in the next month that are close to TC:

Tue 8/20—Bel Lago Winery, Cedar 5:30pm

Wed 8/21—The Pub 8:00pm

GET A TREAT AND TAKE A SEAT!!! Remember that on the final Sunday of month, we are moving our coffee hour into the Fellowship Hall. This allows each person to sit for a moment and perhaps visit with someone new. So, on that Sunday each month be sure to take a turn into the Fellowship Hall. We will have a reminder sign on the counter in the Gathering Space to help you remember. Thank you!

Building and Office Hours are: 9:00am – 2:30pm, Monday – Thursday.

Offerings: Even though the offering plates are passed during the service, you may use the vase in the back of the Sanctuary if you prefer not to touch the offering plate.

A big thank you to all who have turned in Olesons' slips. On April 8th, we received a check from Olesons for \$206.60. Olesons' slips never expire. Please continue to turn in your Olesons receipts to Bethlehem. Thanks so much!!! **Also, the area for the Oleson receipts is in the lower cabinets below the mailboxes (under the A-B-Cs...).** **The cabinet door is marked with the receptacle inside.** **Unfortunately, we are no longer collecting the receipts from Family Fair.**

IMPORTANT NOTICE: We often find the front door and/or the kitchen door unlocked when there is no one in the building. Please be sure that the doors are locked when you leave.

Please Note:

Barbara Oster/Administrative Assistant works 9:00am-2:30pm on Monday, Tuesday and Thursday

Phil Anderson/Bookkeeper works 8:30am-12:30pm on Monday, Tuesday and Thursday. This is a change for the summer months

Alanna Steffunick/Ministry Coordinator works 9:00am-2:30pm – in the office on Tuesday and Thursday and from home on Wednesday

Taking a break for the summer: Wednesday Bible and Book Studies along with Sunday School, Adult Education, XYZ, our Third Thursday services and Tuesday morning Quilters will all pause for the summer. These activities will return in September.

Looking for a link to last month's full Council minutes? Type this address/url into your web browser to get the latest approved minutes from Council: bethlehemtc.org/Council-Minutes OR you may call the office to request a copy.

Prayer Requests:

- Prayer Chain: Please contact Jan Stretlien at jstretlien@gmail.com or 231-947-3265
- Prayers read from the altar: Please call Administrative Assistant in the church office 231-947-9880 or admin@bethlehemtc.org

Celebrate a new child in your life with a rose on the baptismal font! Cost \$10.00 per rose. Contact Barbara Oster at beo6475@yahoo.com or 231.668.7038.

Norm Fred has helped a previously homeless couple for a few years. They are proud people and do not like to be given charity but they will accept help in the form of donated cans that they can recycle for money. Please bring in your recyclables in for them. **Leave them in plastic bags by the garage.** These are nice people. There, but for the Grace of our God, go we.

Are you looking for the Caring Table for your donations? It has been moved inside the coat room to the right. Your donations are very much appreciated.

LOST AND FOUND: If you lose something in the church building, please check our new Lost and Found box located in the Coat Room. Also, if you find something, please put it in the box.

Yarn Available: There is yarn available free for the taking located in the cabinets located under the mailboxes in the Narthex. Take what you need.

Name tags: Your name tags are in your mailboxes. Please retrieve them so you can proudly wear them on Sunday mornings. We often have visitors and with so many recent new members it helps them if they can see a friendly face and attach a name to it.

Hoop's Pet Food Pantry: This is the only pet food pantry in NW lower Michigan. They primarily provide dry food, wet food, treats, cat litter and toys for mostly dogs and cats but they will support any type of pet to the best of their ability. Please visit them at the Square Deal Country Store, 900 Woodmere Ave, TC **from 11:00am – 2:00pm on the 1st and 3rd Saturday of every month** with your donations OR you may leave donations in the tub on our "donations" table in the coat room. The volunteers have expressed their appreciation when receiving our donations.

Have something important going on at Bethlehem that you'd like others to know about? Maybe a Small Group? A Club Event? Feature it on the Screen Announcements, weekly emails and on our Facebook Events Page! If there is something you'd like featured or included in any of these, please reach out to alanna.steffunick@bethlehemtc.org If you are not getting the weekly emails for any reason, please contact Alanna.

Please consider signing up for Altar Flowers for a Sunday service. Please use the sign-up poster in the Narthex by signing on the date you request. Then fill out a pink slip with the necessary information and place it and a check for \$40 (payable to Bethlehem Lutheran Church or BLC) in the offering plate on Sunday morning (Preferable) or during the week, in the Administrative Assistant's mailbox near the church office entrance. You may select either "in honor" or "in memory" or "to celebrate". If someone has already signed on the date you would like, feel free to add your name – we welcome more than one on a Sunday.

The church calendar is below. Please be sure to notify the office (admin@bethlehemtc.org or 231.947.9880) to be sure that your group is of the calendar.

Sunday, August 18

10:00am—Worship Service (S)

11:30am—Youth Gathering Recap (YR)

Monday, August 19

3:00pm—Chair Yoga

6:00pm—Grief Group (Library)

Tuesday, August 20

Bulletin articles due today

9:00am—Property Work Group

6:30pm—Council Meeting (Library)

Wednesday, August 21

5:30pm—Book / Supper Club (FH)

Thursday, August 22

5:30pm—ACA (FH)

Friday, August 23

STAR articles due today

Saturday, August 24

9:00am—Parkinsons Hero Walk (Civic Center)

Sunday, August 25

10:00am—Worship Service (S)

